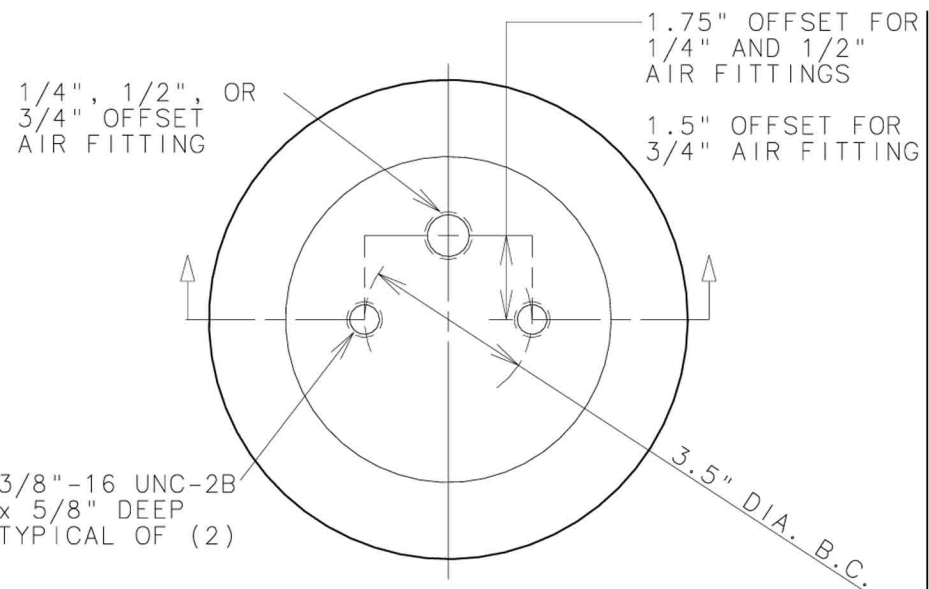
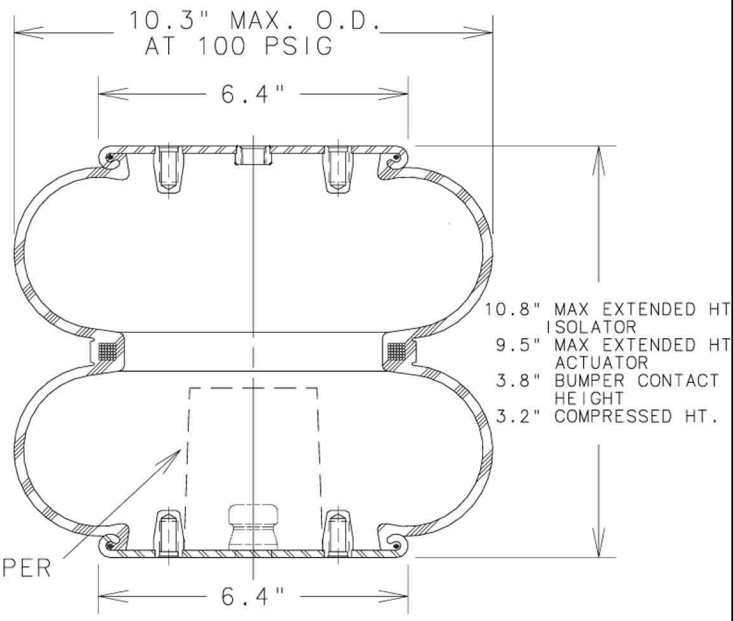


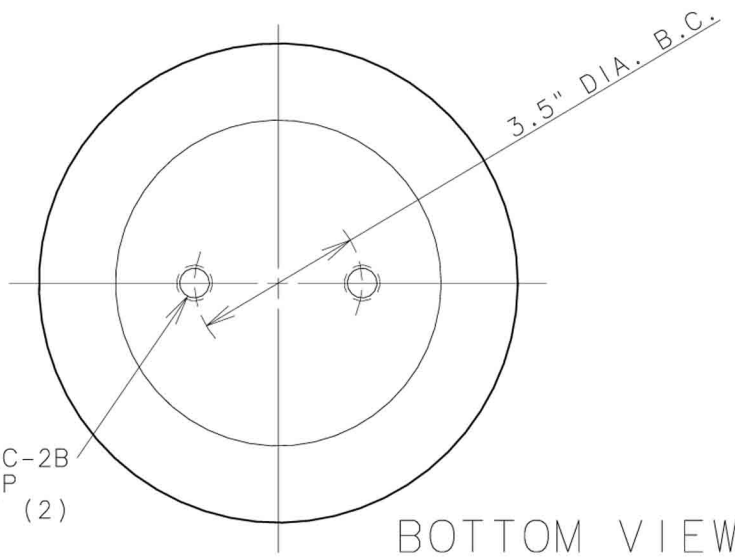
# 2B9-200



TOP VIEW



SIDE VIEW



BOTTOM VIEW

ASSEMBLY NUMBER	ELASTOMER	AIR FITTING	BUMPER INCLUDED
2B9-200	NAT. RUBBER	1/4"-18 NPTF OFFSET 1.75"	NO
2B9-201	NAT. RUBBER	1/4"-18 NPTF OFFSET 1.75"	YES
2B9-204	NAT. RUBBER	1/2"-14 NPTF OFFSET 1.75"	NO
2B9-205	NAT. RUBBER	1/2"-14 NPTF OFFSET 1.75"	YES
2B9-216	NAT. RUBBER	3/4"-14 NPTF OFFSET 1.5"	NO
2B9-208	NAT. RUBBER	3/4"-14 NPTF OFFSET 1.5"	YES
578923202 FLEXMEMBER ONLY	NAT. RUBBER	----	---

## SPRING FEATURES:

- LOAD RANGE (ISOLATOR).....340-3700 lb
- DESIGN HEIGHT RANGE (ISOLATOR).....8.0-9.0 in
- USEABLE STROKE w/o BUMPER (ACTUATOR)....6.3 in
- USEABLE STROKE WITH BUMPER (ACTUATOR)...5.7 in
- ASSEMBLY WEIGHT.....7.5 lb
- TEMPERATURE RANGE\*.....
- FORCE TO COMPRESS AT 0 PSIG (APPROX.)...10 lb
- NOMINAL FREE STANDING HT. AT 0 PSIG.....5.1 in

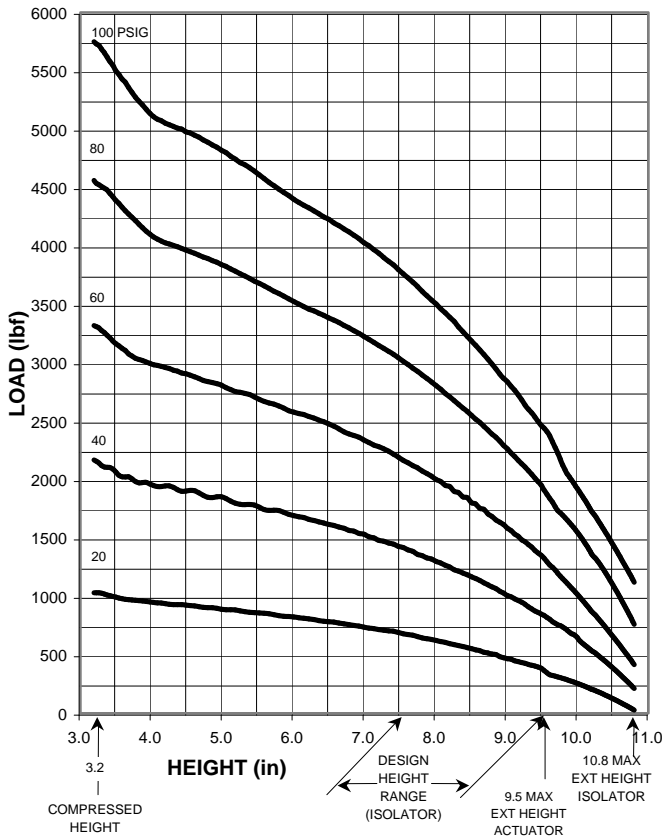
\* NOTE: PRODUCT LIFE MAY BE SHORTENED WHEN OPERATING AT OR NEAR EXTREME TEMPERATURES. SEE TEMPERATURE RANGE GUIDELINES SECTION.

## RECOMMENDED MAX. TORQUE VALUES

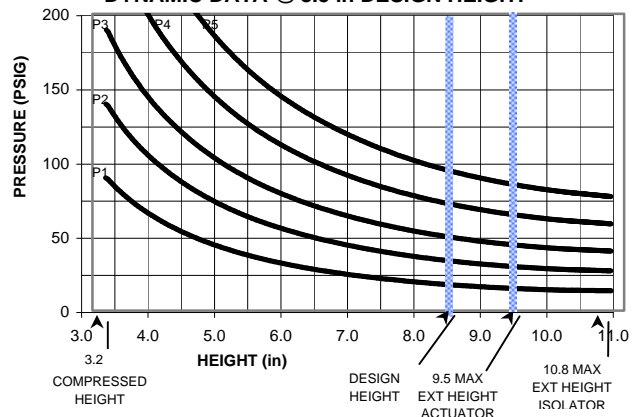
3/8"-16 UNC BLIND TAP TYP. OF (4)	1/4"-18 UNC AIR FITTING	1/2"-14 UNC AIR FITTING	3/4"-14 UNC AIR FITTING
300 in-lb 25 ft-lb	240 in-lb 20 ft-lb	240 in-lb 20 ft-lb	240 in-lb 20 ft-lb

NOTE: SEE GUIDELINES FOR PROPER APPLICATION OF THIS PRODUCT

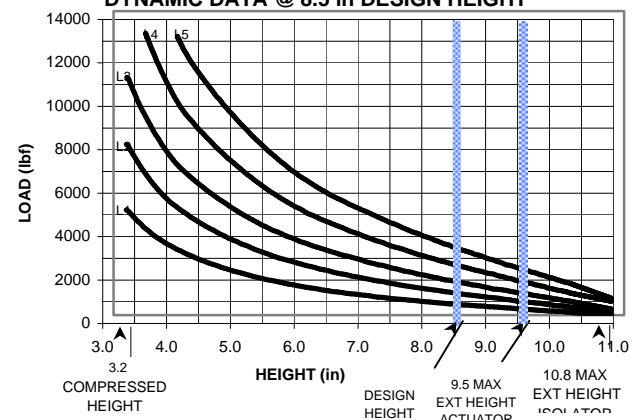
**LOAD vs. DEFLECTION @ CONSTANT PRESSURE**



**DYNAMIC DATA @ 8.5 in DESIGN HEIGHT**



**DYNAMIC DATA @ 8.5 in DESIGN HEIGHT**



**\*\*NOTE: MAXIMUM INFLATION PRESSURE IS 100 PSIG. MAXIMUM JOUNCE PRESSURE IS 200 PSIG. IF YOUR APPLICATION WILL EXCEED THESE LIMITS, CONSULT A GOODYEAR REPRESENTATIVE FOR APPLICATION ASSISTANCE.**

## CONSTANT PRESSURE CHARACTERISTICS

Assembly Height (in)	Volume @ 100 PSIG (in <sup>3</sup> )	Force (lb)				
		@ 20 PSIG	@ 40 PSIG	@ 60 PSIG	@ 80 PSIG	@ 100 PSIG
10.8	475	20	200	400	700	1100
10.0	442	250	620	1000	1500	1900
9.5	429	340	800	1300	1800	2300
8.5	399	540	1150	1700	2400	3100
7.5	363	660	1400	2100	2900	3700
6.5	321	750	1600	2400	3300	4200
5.5	274	850	1700	2600	3600	4500
4.5	223	900	1900	2800	3900	4900
3.5	169	950	2000	3100	4300	5400
3.2	155	1000	2100	3300	4500	5700

## DYNAMIC CHARACTERISTICS

Design Height (in)	Load (lb)	Pressure (PSIG)	Spring Rate (lb/in)	Natural Frequency	
				cpm	Hz
9.5	500	24	320	150	2.50
	1000	45	480	130	2.17
	1500	64	705	129	2.15
	2250	90	980	124	2.07
8.5	500	18	255	133	2.22
	1000	34	400	119	1.98
	1500	50	570	116	1.93
	2250	72	755	110	1.83
	3000	94	1010	109	1.82
7.5	500	15	230	127	2.12
	1000	29	395	117	1.95
	1500	43	540	113	1.88
	2250	62	750	109	1.82
	3000	81	950	106	1.77